

Configurações | Arena Total

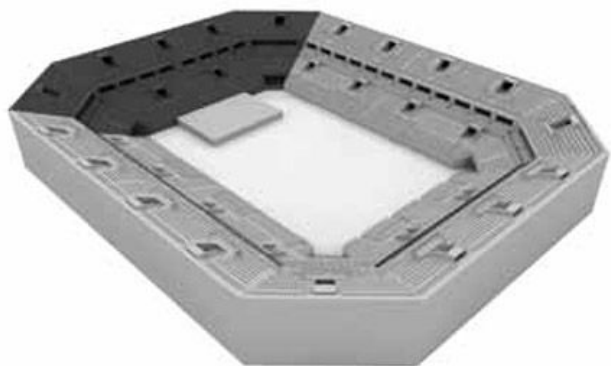
Settings | Full Arena

área total: 2.400 m²

total area: 2,400 sqm

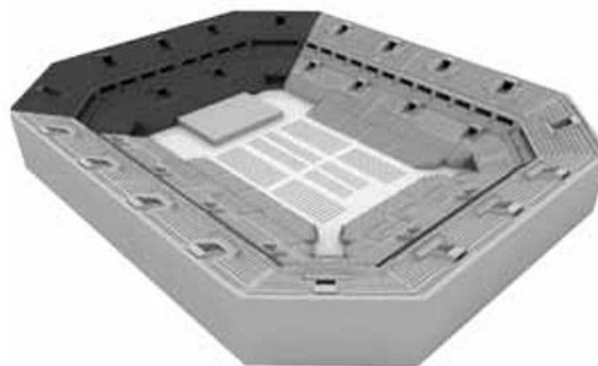
Pista livre | capacidade: de 5.000 a 15.000

Open floor | capacity: holds from 5,000 to 15,000



Auditório | capacidade: de 2.600 a 10.000

Auditorium | capacity: holds from 2,600 to 10,000



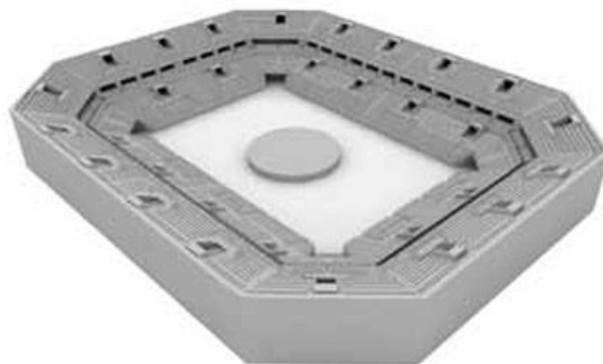
Mesas 10 lugares | capacidade: de 1.600 a 9.000

10-seat tables | capacity: holds from 1,600 to 9,000



Palco central | capacidade: de 5.000 a 18.000

Central stage | capacity: holds from 5,000 to 18,000



Auditório | Informações

Auditorium | Information

área total: 412 m²

total area: 412 sqm

palco: 8,5 x 2,8 m

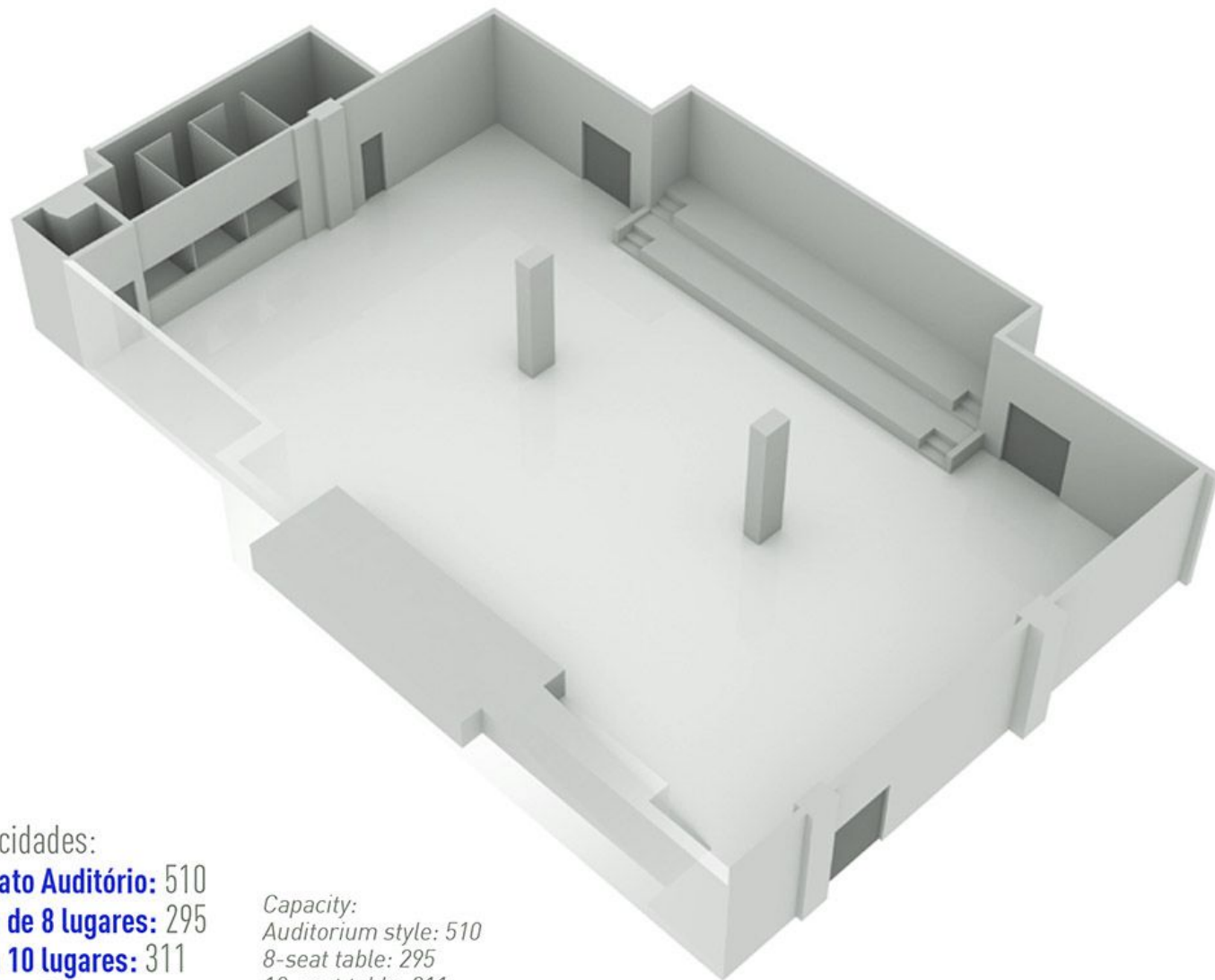
stage: 8.5 x 2.8 m

pé direito: 3,5 m

height: 3.5 m

3 cabines de som

3 sound booth



Capacidades:

Formato Auditório: 510

Mesa de 8 lugares: 295

Mesa 10 lugares: 311

Escolar: 293

Coquetel: 535

Capacity:

Auditorium style: 510

8-seat table: 295

10-seat table: 311

Classroom style: 293

Cocktail: 535

Configurações | Arena Parcial

Settings | Half Arena

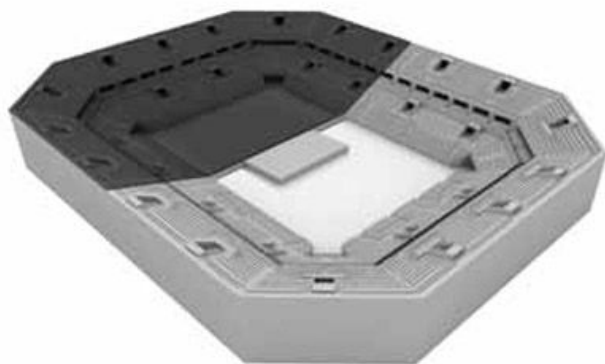
CAPACIDADE ESTIMADA
ESTIMATED CAPACITY

área total: 1.200 m²

total area: 1,200 sqm

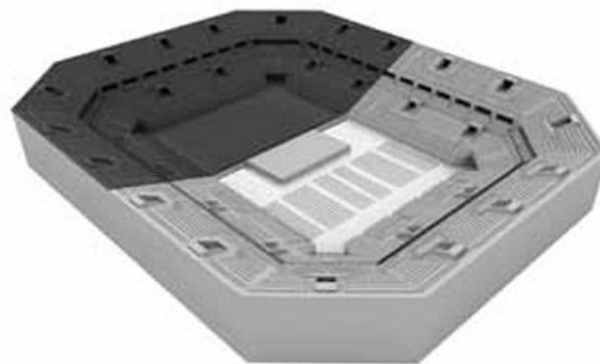
Pista livre | capacidade: de 3.000 a 8.000

Open floor | capacity: holds from 3,000 to 8,000



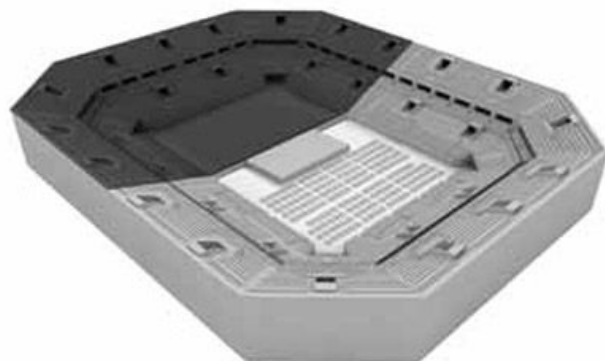
Auditório | capacidade: de 1.400 a 6.000

Auditorium | capacity: holds from 1,400 to 6,000



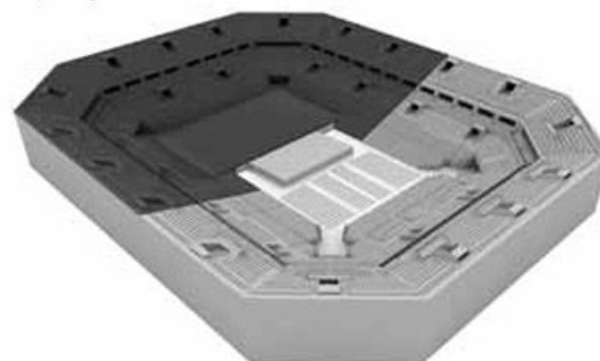
Mesas 10 lugares | capacidade: de 900 a 5.000

10-seat table | capacity: holds from 900 to 5,000



Auditório com retrátil | capacidade: de 750 a 6.000

*Auditorium with retractable seats |
capacity: holds from 750 to 6,000*



Configurações | Clubes Lounges

Settings | Clubs Lounges

área útil: 440 m²

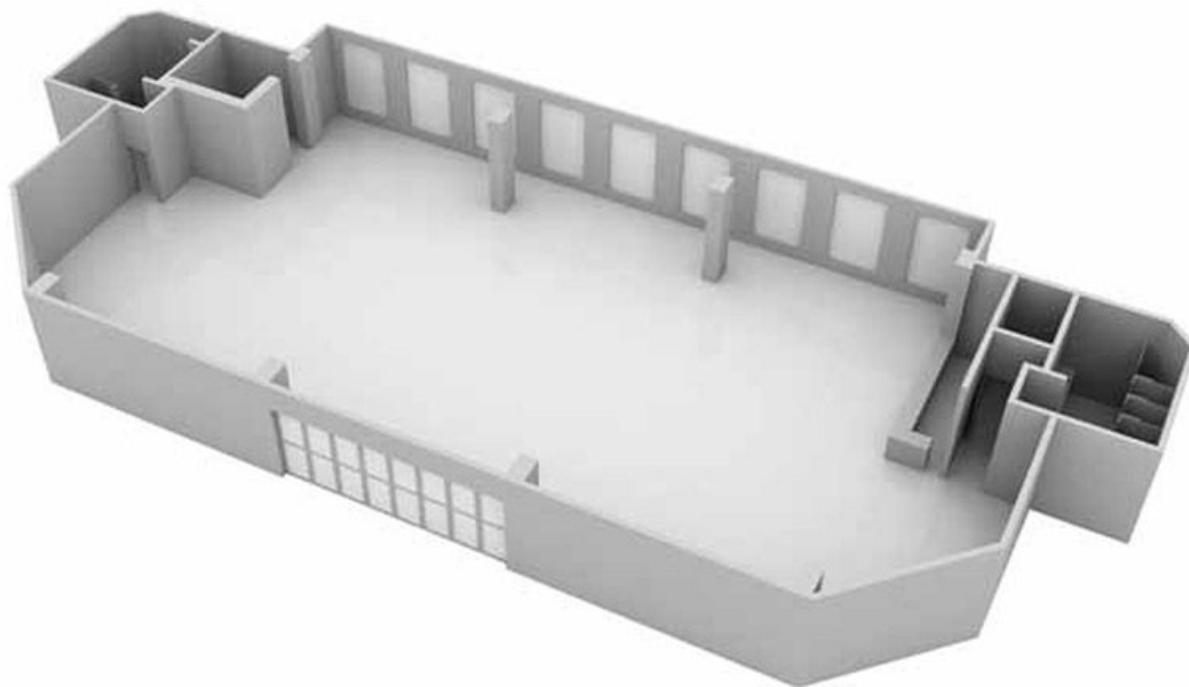
area: 440 sqm

pé direito: 2,90 m

height: 2.90 m

banheiros independentes

independent bathrooms



Pista livre | capacidade: 600

Mesas | capacidade: 332

Auditório | capacidade: 544

Coquetel | capacidade: 572

Open floor | capacity: 600

Table | capacity: 332

Auditorium | capacity 544

Cocktail | capacity: 572